

## System SKS 1

### A Simple and Accurate System to Control Wire Rope Tension and to Protect Machinery

Wire ropes are used extensively in industrial applications involving lifting machines such as lift systems, cable car systems as well as crane services. In many cases, failure of a wire rope could lead to extensive damage to the equipment.

The KST system SKS 1 measures wire rope tension loads and delivers information on overload and slack-rope conditions as well as a motion shut-off activated by relays.



The system consists of only two components: a wire rope tension sensor and an electronic switching amplifier that offers three individually settable switching points like

- slackrope condition
- 90% of maximum load
- maximum load

Activation of visual and audible warnings is also possible. The wire rope tension sensor is adapted to the wire rope very easily by just two screws.



## Wire Rope Tension Sensor

The Wire Rope Tension Sensor made of stainless steel with integrated and perfectly sealed electronics to measure the load applied. What makes this sensor stand out is its rugged, compact and accurate design

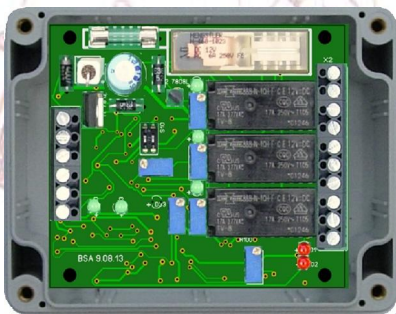


### Technical Data:

Dimensions:	Size 1: 188 * 65 * 65 mm Size 2: 305 * 88 * 88 mm Size 3: 400 * 88 * 88 mm
Rope Diameter:	Size 1: 7 ... 26 mm Size 2: 12 ... 44 mm Size 3: 20 ... 44 mm
Max. Load:	Size 1: ... 7 ton Size 2: 8 ... 20 ton Size 3: 20 ... 40 ton
Protection Class:	IP 65
Accuracy:	1,5%
Overload Capacity:	150 %
Temperature Range:	-25°C to +70°C

## Switching Amplifier

Calibration of the switching amplifier to the switchpoints requested is very easy and performed without any special tools by just applying the appropriate load and setting the relays equipped with indicating diodes.



### Technical Data:

Dimensions:	115 * 90 * 55 mm (LWH)
Supply Voltage:	12/24 VDC, 150 mA
Analogue Inputs:	2 Inputs: 1... 8 V or 4... 20 mA
Analogue Output:	1 Output: 0,5 ... 8 V
Relay Contact Rating	min. 250 VAC / 6 A
Temperature Range:	-40°C ... +75°C
Rel. Humidity:	40°C/90%, not cond.
Protection Class:	IP 65

Safety, accuracy, and reliability are the remarkable features of this high-performance system available for a very attractive price.



ENGINEERING AND  
SYSTEM INTEGRATION

KST  
Am Dwarstief 15  
D-26826 Weener - Germany  
Phone: +49-(0)4953-990 725  
info@kst-systems.de  
www.kst-systems.de